

\$590,000 - 11206 85 Street, Edmonton

MLS® #E4382795

\$590,000

1 Bedroom, 1.00 Bathroom, 498 sqft
Single Family on 0.00 Acres

Parkdale (Edmonton), Edmonton, AB

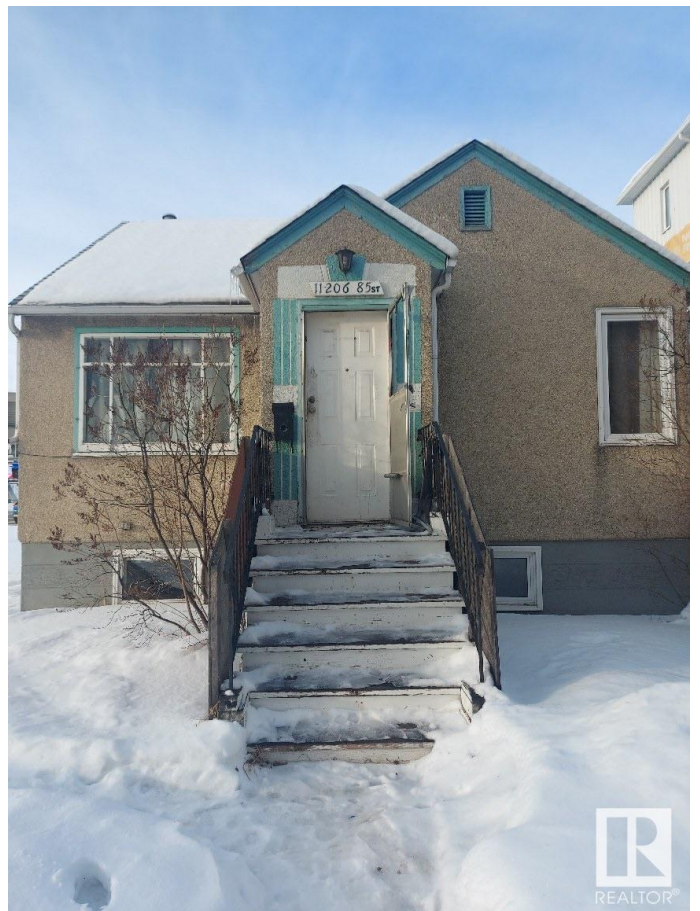
Visit the Listing Brokerage (and/or listing REALTOR®) website to obtain additional information. 2 Lots next to Stadium LRT train station. They are zoned R9. 66 feet X 150 feet I think. Addresses are 11206-85 st and 11202-85 st. about 66'W X 120'L, 2 lots with a house. Basically land value only. RIGHT across from the LRT station. Zoned R-9! Good commercial development site. Lots of potential development options with approval from the city.

Built in 1948

Essential Information

MLS® #	E4382795
Price	\$590,000
Bedrooms	1
Bathrooms	1.00
Full Baths	1
Square Footage	498
Acres	0.00
Year Built	1948
Type	Single Family
Sub-Type	Detached Single Family
Style	Bungalow
Status	Active

Community Information



Address	11206 85 Street
Area	Edmonton
Subdivision	Parkdale (Edmonton)
City	Edmonton
County	ALBERTA
Province	AB
Postal Code	T5B 3C7

Amenities

Amenities	See Remarks
Parking	See Remarks

Interior

Appliances	See Remarks
Heating	Forced Air-2, Natural Gas
Stories	1
Has Basement	Yes
Basement	Full, Finished

Exterior

Exterior	See Remarks
Exterior Features	See Remarks
Roof	See Remarks
Construction	See Remarks
Foundation	See Remarks

Additional Information

Date Listed	April 18th, 2024
Days on Market	357
Zoning	Zone 05

DATA IS DEEMED RELIABLE BUT IS NOT GUARANTEED ACCURATE BY THE REALTORS® ASSOCIATION OF EDMONTON. COPYRIGHT 2025 BY THE REALTORS® ASSOCIATION OF EDMONTON. ALL RIGHTS RESERVED. Trademarks are owned or controlled by the Canadian Real Estate Association (CREA) and identify real estate professionals who are members of CREA (REALTOR®, REALTORS®) and/or the quality of services they provide (MLS®, Multiple Listing Service®)

Listing information last updated on April 10th, 2025 at 7:02am MDT