

Courtesy Of Kim Lillo Of MaxWell Polaris

\$495,000 - 1401 12319 Jasper Avenue, Edmonton

MLS® #E4387491

\$495,000

2 Bedroom, 2.00 Bathroom, 1,660 sqft
Condo / Townhouse on 0.00 Acres

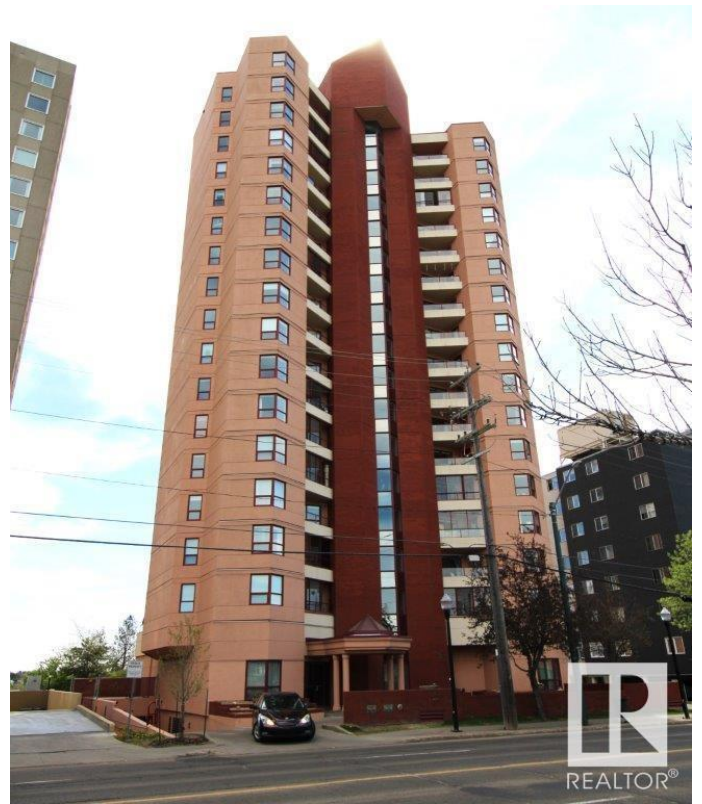
WÃ@hkwÃªntÃ´win, Edmonton, AB

INCREDIBLE PANORAMIC RIVER VALLEY VIEW from this desirable Glenora 14th floor unit. Adult living 45+ This 2 bedroom/ 2 bath unit is the largest floor plan. 1600+ sq ft spacious & well maintained by the original owner. Expansive view from the large south-facing deck overlooking the river valley & golf course w/ BBQ hookup. 2 titled underground stalls with built-in secure storage. Building amenities include social/recreation room, game room, exercise room, lovely private deck area, guest suite & underground visitor parking. Condo Fees include: gas, heat, air, power, cable, water, sewage & maintenance. Newer elevators and exterior upkeep recently completed. Easy access to transportation, shopping, restaurants, golf, river valley, sporting & concerts. Well maintained & managed property.

Built in 1989

Essential Information

MLS® #	E4387491
Price	\$495,000
Bedrooms	2
Bathrooms	2.00
Full Baths	2
Square Footage	1,660
Acres	0.00



Year Built	1989
Type	Condo / Townhouse
Sub-Type	Apartment High Rise
Style	Single Level Apartment
Status	Active

Community Information

Address	1401 12319 Jasper Avenue
Area	Edmonton
Subdivision	Wøhkwãntwin
City	Edmonton
County	ALBERTA
Province	AB
Postal Code	T5N 4A7

Amenities

Amenities	Air Conditioner, Deck, Exercise Room, Guest Suite, Hot Water Natural Gas, No Smoking Home, Parking-Extra, Parking-Visitor, Party Room, Secured Parking, Storage-In-Suite
Parking Spaces	2
Parking	Underground

Interior

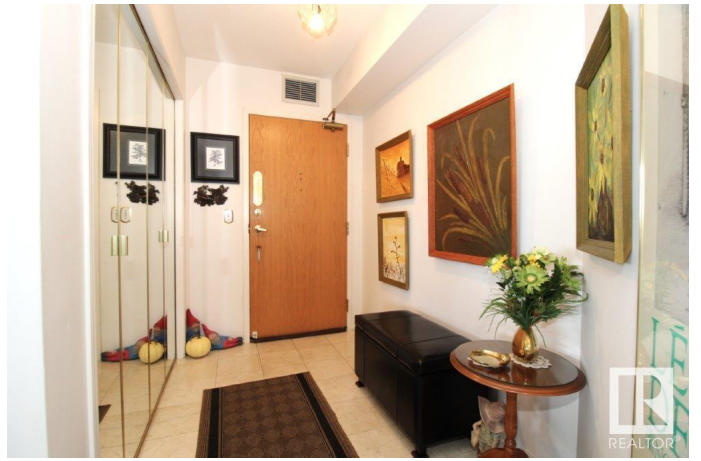
Interior Features	ensuite bathroom
Appliances	Dishwasher-Built-In, Oven-Microwave, Refrigerator, Stacked Washer/Dryer, Stove-Electric
Heating	Hot Water, Natural Gas
# of Stories	18
Stories	1
Has Basement	Yes
Basement	None, No Basement

Exterior

Exterior	Concrete, Brick, Stucco
Exterior Features	Golf Nearby, Public Transportation, River Valley View, Shopping Nearby
Roof	Tar & Gravel
Construction	Concrete, Brick, Stucco
Foundation	Concrete Perimeter

Additional Information

Date Listed May 15th, 2024
Days on Market 338
Zoning Zone 12
Condo Fee \$1,267



DATA IS DEEMED RELIABLE BUT IS NOT GUARANTEED ACCURATE BY THE REALTORS® ASSOCIATION OF EDMONTON. COPYRIGHT 2025 BY THE REALTORS® ASSOCIATION OF EDMONTON. ALL RIGHTS RESERVED. Trademarks are owned or controlled by the Canadian Real Estate Association (CREA) and identify real estate professionals who are members of CREA (REALTOR®, REALTORS®) and/or the quality of services they provide (MLS®, Multiple Listing Service®)

Listing information last updated on April 17th, 2025 at 10:17pm MDT