

Courtesy Of Treva Annette Of Rite Realty

\$229,000 - 446 10636 120 Street, Edmonton

MLS® #E4401379

\$229,000

2 Bedroom, 2.00 Bathroom, 936 sqft
Condo / Townhouse on 0.00 Acres

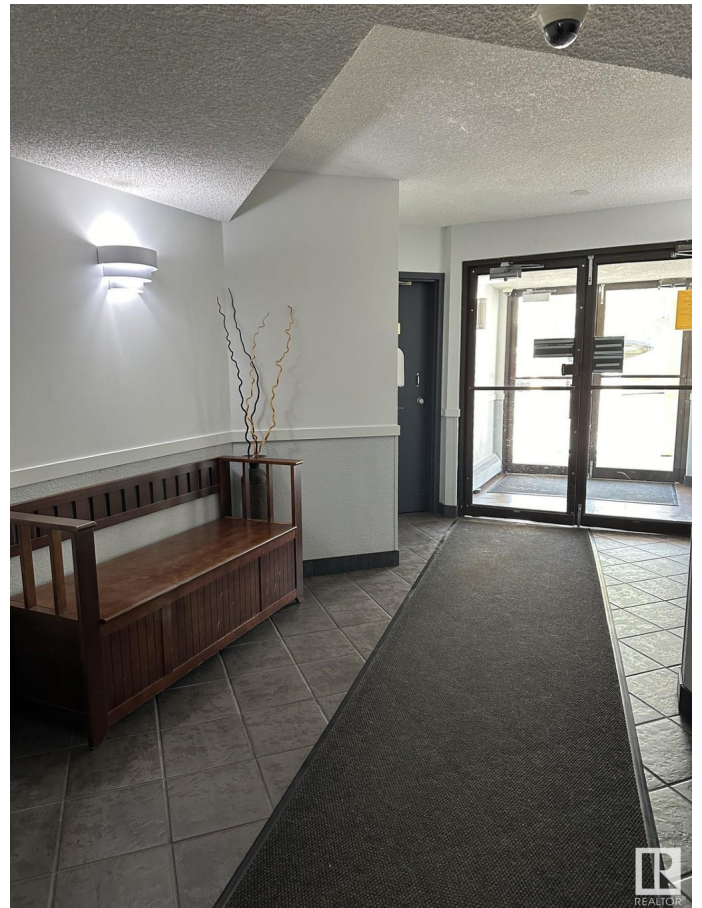
Queen Mary Park, Edmonton, AB

RENOVATED AND MOVE IN READY
AMAZING SPACE OVER LOOKING THE
INNER COURTYARD AND IN THE HEART
OF THE BREWERY DISTRICT!!! FABULOUS
TOP FLOOR CORNER UNIT in "THE POINTE
II"! This is an impressive quality renovated &
spacious 2 bedroom 2 bathroom top floor
QUIET corner unit that has large sized living
areas. The space features plank flooring, lots
of closet and storage space, bedrooms that
will fit queen and king beds, in suite laundry,
beautiful kitchen with stainless appliances and
a serving window with an eating bar, spacious
living room with a large deck and a large
dinning area. The 2 bedrooms are at opposite
ends of the suite so great for privacy. An
impressive and a must see apartment!

Built in 1993

Essential Information

MLS® #	E4401379
Price	\$229,000
Bedrooms	2
Bathrooms	2.00
Full Baths	2
Square Footage	936
Acres	0.00
Year Built	1993



Type	Condo / Townhouse
Sub-Type	Lowrise Apartment
Style	Single Level Apartment
Status	Active

Community Information

Address	446 10636 120 Street
Area	Edmonton
Subdivision	Queen Mary Park
City	Edmonton
County	ALBERTA
Province	AB
Postal Code	T5H 4L5

Amenities

Amenities	Intercom, No Animal Home, No Smoking Home, Parking-Visitor, Storage-In-Suite
Parking	Stall

Interior

Interior Features	ensuite bathroom
Appliances	Dishwasher-Built-In, Dryer, Hood Fan, Refrigerator, Stove-Electric, Washer
Heating	Baseboard, Natural Gas, Water
# of Stories	4
Stories	1
Has Basement	Yes
Basement	None, No Basement

Exterior

Exterior	Wood, Stucco
Exterior Features	Landscaped, Public Transportation, Shopping Nearby
Roof	Asphalt Shingles
Construction	Wood, Stucco
Foundation	Concrete Perimeter

Additional Information

Date Listed	August 9th, 2024
Days on Market	239

Zoning
Condo Fee

Zone 08
\$479



DATA IS DEEMED RELIABLE BUT IS NOT GUARANTEED ACCURATE BY THE REALTORS® ASSOCIATION OF EDMONTON. COPYRIGHT 2025 BY THE REALTORS® ASSOCIATION OF EDMONTON. ALL RIGHTS RESERVED. Trademarks are owned or controlled by the Canadian Real Estate Association (CREA) and identify real estate professionals who are members of CREA (REALTOR®, REALTORS®) and/or the quality of services they provide (MLS®, Multiple Listing Service®)

Listing information last updated on April 5th, 2025 at 12:17am MDT