

\$798,000 - 2919 158 Street, Edmonton

MLS® #E4423055

\$798,000

3 Bedroom, 2.50 Bathroom, 2,524 sqft

Single Family on 0.00 Acres

Glenridding Ravine, Edmonton, AB

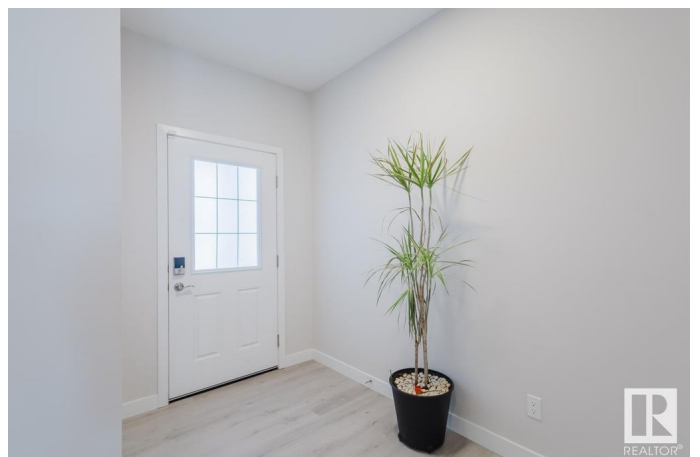
Back to the Ravine! This mint condition all custom built gorgeous Jayman home quietly seated in the upscale neighbourhood of Brenton at Glenridding Ravine is truly one of its kind in SW Edmonton. Boosted over 2500+ squarefeet, this lovely home features 9' ceiling in main level with bright and modern living room equipped with large windows and electric fireplace, together with maintenance-free deck overseeing the astonishing ravine view. The gourmet kitchen offers top tier upgrades with massive double islands and premier cabinetry.

Upstairs you will find huge primary bedroom facing the ravine with spacious 5 piece en-suite, laundry room, the bonus room, two other good size secondary bedrooms and another 5 pc bath. This home is also upgraded to have solar panels and Ring smart home system. Premier and rare location lot, top trend design and handcraft workmanship, do not miss this dream home!

Built in 2021

Essential Information

MLS® #	E4423055
Price	\$798,000
Bedrooms	3
Bathrooms	2.50
Full Baths	2



Half Baths	1
Square Footage	2,524
Acres	0.00
Year Built	2021
Type	Single Family
Sub-Type	Detached Single Family
Style	2 Storey
Status	Active

Community Information

Address	2919 158 Street
Area	Edmonton
Subdivision	Glenridding Ravine
City	Edmonton
County	ALBERTA
Province	AB
Postal Code	T6W 4X4

Amenities

Amenities	See Remarks
Parking	Double Garage Attached

Interior

Interior Features	ensuite bathroom
Appliances	Alarm/Security System, Dishwasher-Built-In, Dryer, Garage Control, Garage Opener, Hood Fan, Oven-Built-In, Oven-Microwave, Refrigerator, Stove-Countertop Gas, Washer
Heating	Forced Air-1, Natural Gas
Stories	2
Has Basement	Yes
Basement	Full, Unfinished

Exterior

Exterior	Wood, Vinyl
Exterior Features	Environmental Reserve, Golf Nearby, Landscaped, No Through Road, Playground Nearby, Ravine View, Shopping Nearby, See Remarks, Partially Fenced
Roof	Asphalt Shingles
Construction	Wood, Vinyl

Foundation Concrete Perimeter

Additional Information

Date Listed February 26th, 2025

Days on Market 52

Zoning Zone 56

DATA IS DEEMED RELIABLE BUT IS NOT GUARANTEED ACCURATE BY THE REALTORS® ASSOCIATION OF EDMONTON. COPYRIGHT 2025 BY THE REALTORS® ASSOCIATION OF EDMONTON. ALL RIGHTS RESERVED. Trademarks are owned or controlled by the Canadian Real Estate Association (CREA) and identify real estate professionals who are members of CREA (REALTOR®, REALTORS®) and/or the quality of services they provide (MLS®, Multiple Listing Service®)

Listing information last updated on April 19th, 2025 at 5:02am MDT