

Courtesy Of Mathew T Haupt and Dane Phaneuf Of Exp Realty

\$1,799,980 - 7549 May Common, Edmonton

MLS® #E4431940

\$1,799,980

4 Bedroom, 3.50 Bathroom, 3,509 sqft

Single Family on 0.00 Acres

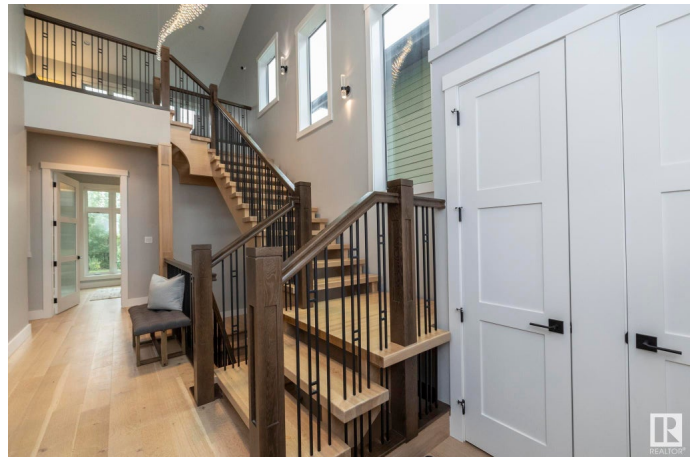
Magrath Heights, Edmonton, AB

Elevate your lifestyle with 7549 May Common! Nestled against a captivating ravine, this home is a showstopper at every turn. Over 3500 sqft + FF BSMT, it's a masterpiece boasting 4 beds & 3½ baths. Unleash your inner chef in the gourmet kitchen, while the private dining room adds a touch of elegance. Cozy breakfast nook, living room w/ FP, office, mudroom, & powder room. Upstairs features a bonus room, the main bath and 3 bedrooms. The primary is a haven of luxury w/ walk-in closet and lavish spa like 5pc ensuite. The FF BSMT is an entertainment haven with a 4th bed, 3pc bath, wet bar, family room, rec room & golf simulator room! Triple car garage adds convenience & backyard flows to ravine-side walking path. Top-notch appliances, granite counters, eat-in island, custom cabinetry, porcelain tile & engineered wood flooring. The exterior is stone & hardie board. Craftsmanship shines w/ meticulous attention to detail, setting this home apart. Nearby amenities, schools & Terwillegar Rec Centre.

Built in 2015

Essential Information

| | |
|----------|-------------|
| MLS® # | E4431940 |
| Price | \$1,799,980 |
| Bedrooms | 4 |



| | |
|----------------|------------------------|
| Bathrooms | 3.50 |
| Full Baths | 3 |
| Half Baths | 1 |
| Square Footage | 3,509 |
| Acres | 0.00 |
| Year Built | 2015 |
| Type | Single Family |
| Sub-Type | Detached Single Family |
| Style | 2 Storey |
| Status | Active |

Community Information

| | |
|-------------|-----------------|
| Address | 7549 May Common |
| Area | Edmonton |
| Subdivision | Magrath Heights |
| City | Edmonton |
| County | ALBERTA |
| Province | AB |
| Postal Code | T6R 0G9 |

Amenities

| | |
|-----------|---|
| Amenities | Air Conditioner, Bar, Closet Organizers, Deck, Wet Bar, See Remarks |
| Parking | Triple Garage Attached |

Interior

| | |
|-------------------|---|
| Interior Features | ensuite bathroom |
| Appliances | Dishwasher-Built-In, Dryer, Hood Fan, Oven-Microwave, Refrigerator, Stove-Gas, Washer |
| Heating | Forced Air-1, Natural Gas |
| Fireplace | Yes |
| Fireplaces | Insert, Stone Facing |
| Stories | 3 |
| Has Basement | Yes |
| Basement | Full, Finished |

Exterior

| | |
|-------------------|---|
| Exterior | Wood, Stone, Hardie Board Siding |
| Exterior Features | Landscaped, Playground Nearby, Public Transportation, Ravine View, Schools, Shopping Nearby |

| | |
|--------------|----------------------------------|
| Roof | Asphalt Shingles |
| Construction | Wood, Stone, Hardie Board Siding |
| Foundation | Concrete Perimeter |

School Information

| | |
|------------|------------------------|
| Elementary | NELLIE CARLSON SCHOOL |
| Middle | NELLIE CARLSON SCHOOL |
| High | LILLIAN OSBORNE SCHOOL |

Additional Information

| | |
|----------------|------------------|
| Date Listed | April 21st, 2025 |
| Days on Market | 1 |
| Zoning | Zone 14 |

DATA IS DEEMED RELIABLE BUT IS NOT GUARANTEED ACCURATE BY THE REALTORS® ASSOCIATION OF EDMONTON. COPYRIGHT 2025 BY THE REALTORS® ASSOCIATION OF EDMONTON. ALL RIGHTS RESERVED. Trademarks are owned or controlled by the Canadian Real Estate Association (CREA) and identify real estate professionals who are members of CREA (REALTOR®, REALTORS®) and/or the quality of services they provide (MLS®, Multiple Listing Service®)

Listing information last updated on April 22nd, 2025 at 6:47am MDT